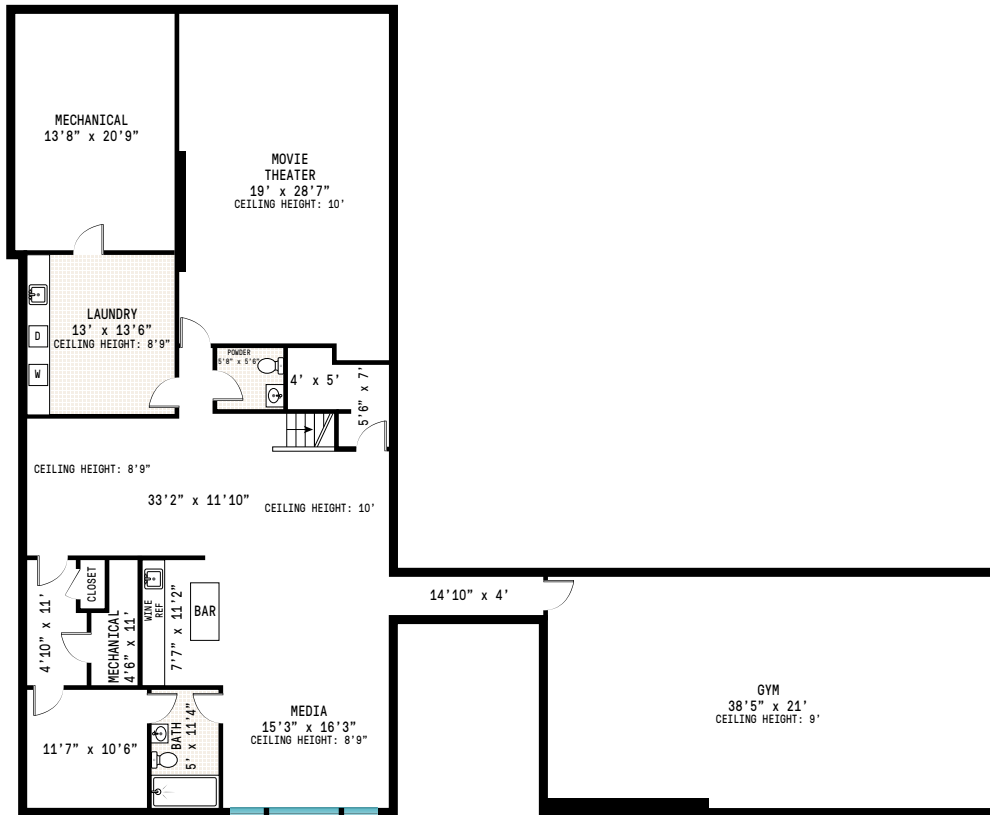
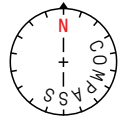


**FIRST FLOOR**  
CEILING HEIGHT: 12'

FIRST FLOOR INT: 3,480 SQFT  
FIRST FLOOR OUT: 1,462 SQFT  
GARAGE: 735 SQFT



# 989 DEERFIELD ROAD, WATER MILL

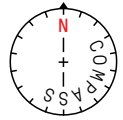
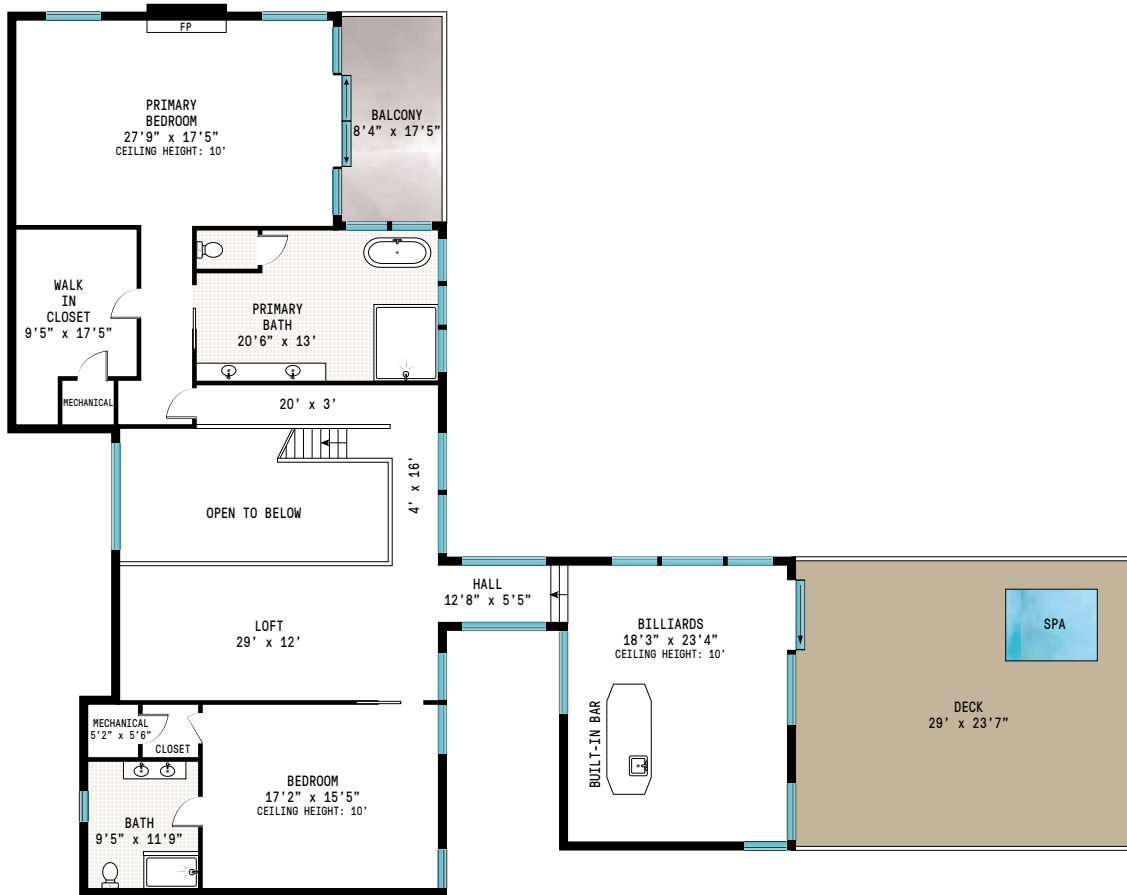


**LOWER LEVEL**  
CEILING HEIGHT: 10'

LOWER LEVEL: 3,277 SQFT



Compass is a licensed real estate broker and abides by Equal Housing Opportunity laws. All material presented herein is intended for informational purposes only. Information is compiled from sources deemed reliable but is subject to errors, omissions, changes in price, condition, sale, or withdraw without notice. No statement of measurements and square footages are approximate. Exact dimensions can be obtained by retaining the services of an architect or engineer. This is not intended to solicit property already listed.



**SECOND FLOOR**  
CEILING HEIGHT: 10'

SECOND FLOOR INT: 2,508 SQFT  
SECOND FLOOR OUT: 1,095 SQFT

